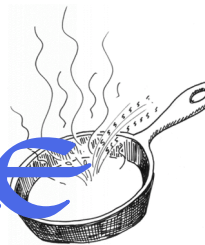




SIZZLE

DATA IS THE NEW BACON!



New Registration Report

Exciting changes are happening in the world of registration reports! Beginning with the registration reports for winter 2019 and spring 2019 a new side-by-side format is being used to allow for easier comparison of previous term data to current term data. Headcount by local high school and AHC promise status is also available. And, for the first time, the entire package is wrapped up and presented to the public without need for a Tableau login (if you currently receive an emailed report, that report will continue). The registration report can be accessed via the 'Registration Report' link in the left side navigation bar on the IE homepage or by direct link --> [Registration Report](#).

In This Issue:

- New Reg Report for Winter and Spring
- AHC Factbook

Highlights of the new report:

Winter 2018 as of 12/12/2017

Winter 2019 as of 12/12/2018

Side by side for quick comparison

	Credit	NC		Credit	NC
FTES winter prior	136	1	FTES winter current	164	1
Enrollment winter prior	1,346	53	Enrollment winter current	1,467	63
Drops winter prior	291	1	Drops winter current	344	



Filter data by various report elements

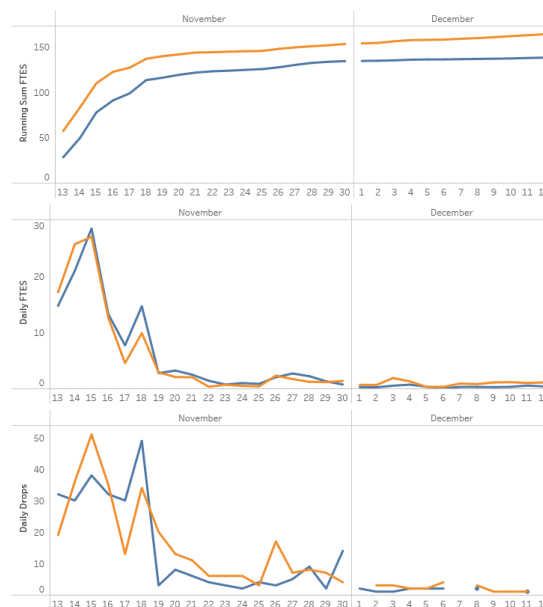
City
(All) ▾

Campus Desc_
(All) ▾

EthnicitySimple
(All) ▾

AgeAtTerm
(All) ▾

Graphs for running total of FTES, daily FTES and daily drops. Hover over the daily graphs to get detailed info



The registration reports will be updated the beginning of every week until the end of the term. Follow the link above and check out the updated report today!

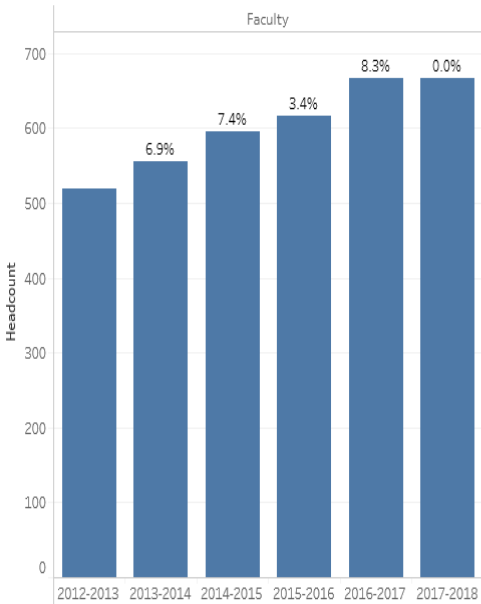
AHC Factbook 2018

The AHC Factbook has been updated with information through spring 2018. Following the success of the online format introduced last year, the Factbook is once again interactive and online. The Factbook can be accessed via the 'Factbook' link in the left side navigation bar on the IE homepage or by direct link --> [AHC Factbook](#)

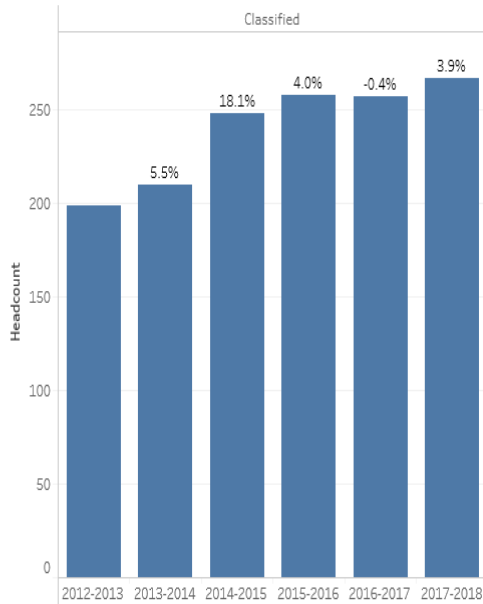
Factbook Highlights

The first graphic shows the growth of faculty and classified counts at AHC over the past six years. The second graphic shows the number of regular and transfer degrees students have earned over the past five years. Many more interesting data facts await so visit the AHC Factbook today!

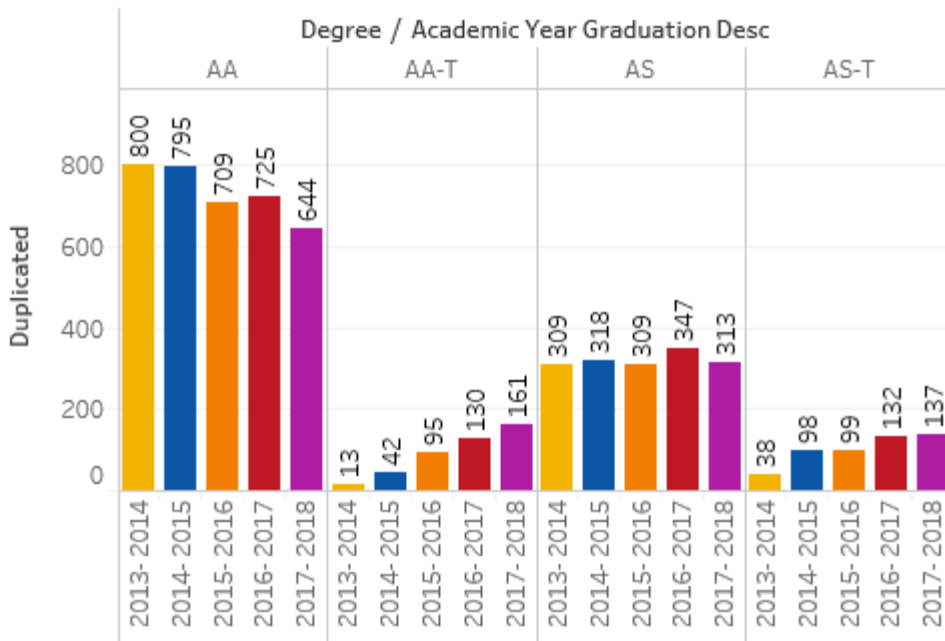
Faculty count and % change from previous year



Classified count and % change from previous year



2yr Degrees - Individual



Contact Us

Institutional Effectiveness
Bldg. A-400

[Webpage](#) | [Data Request](#)
(805)922-6966 ext.3045

Winter Reg Report Quick Stats

12/12/2017 compared to 12/12/2018

Winter Credit Students	Increase in 2019 compared to 2018
FTES	21%
Enrollment	9%
Sections	13%
Headcount	6%
Avg Unit Load	5%

Spring Reg Report Quick Stats

Day 3 of priority Registration (11/15)

Top subjects by FTES for Spring

12/12/2017 compared to 12/12/2018

Subject	Spring 2018 FTES	Spring 2019 FTES
MATH	74.2	64.8
ENGL	46.8	45.4
CHEM	34.8	33.3
BIOL	32.4	42.1

The four subjects above make up about 40% of all registrations (by FTES) for day 3 of priority registration.

